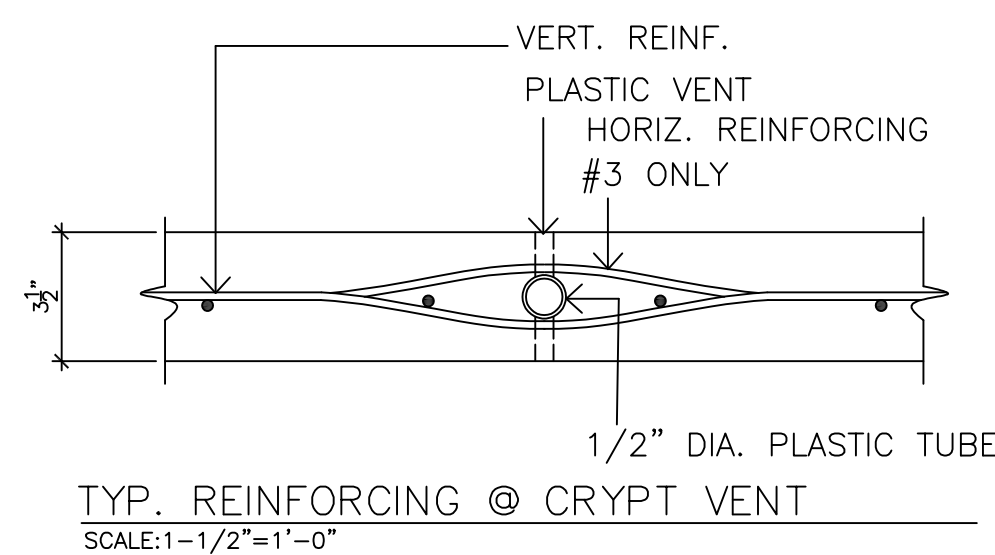
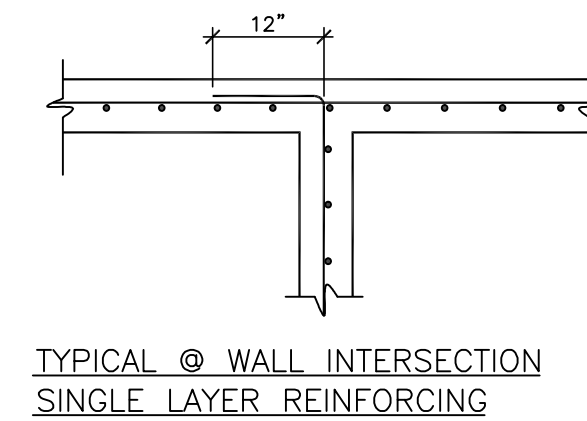
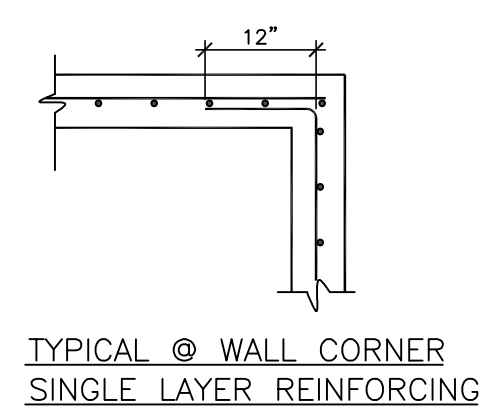
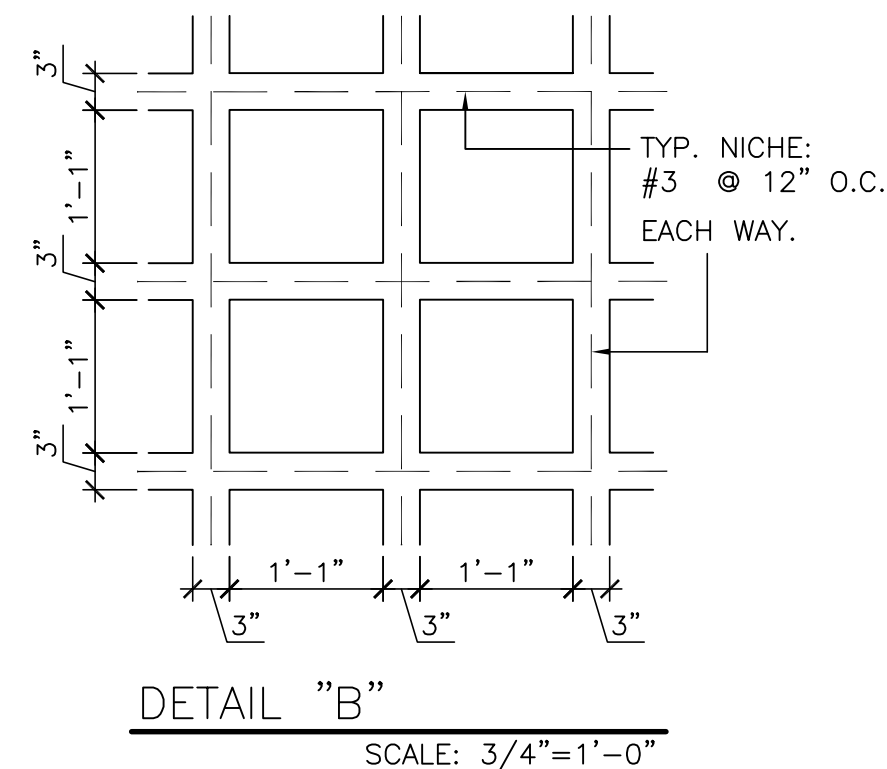
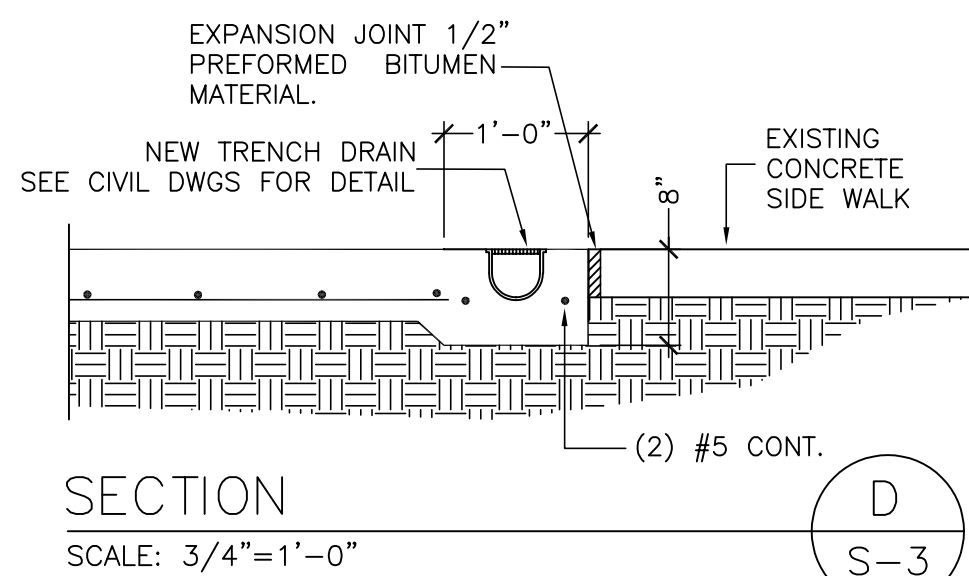
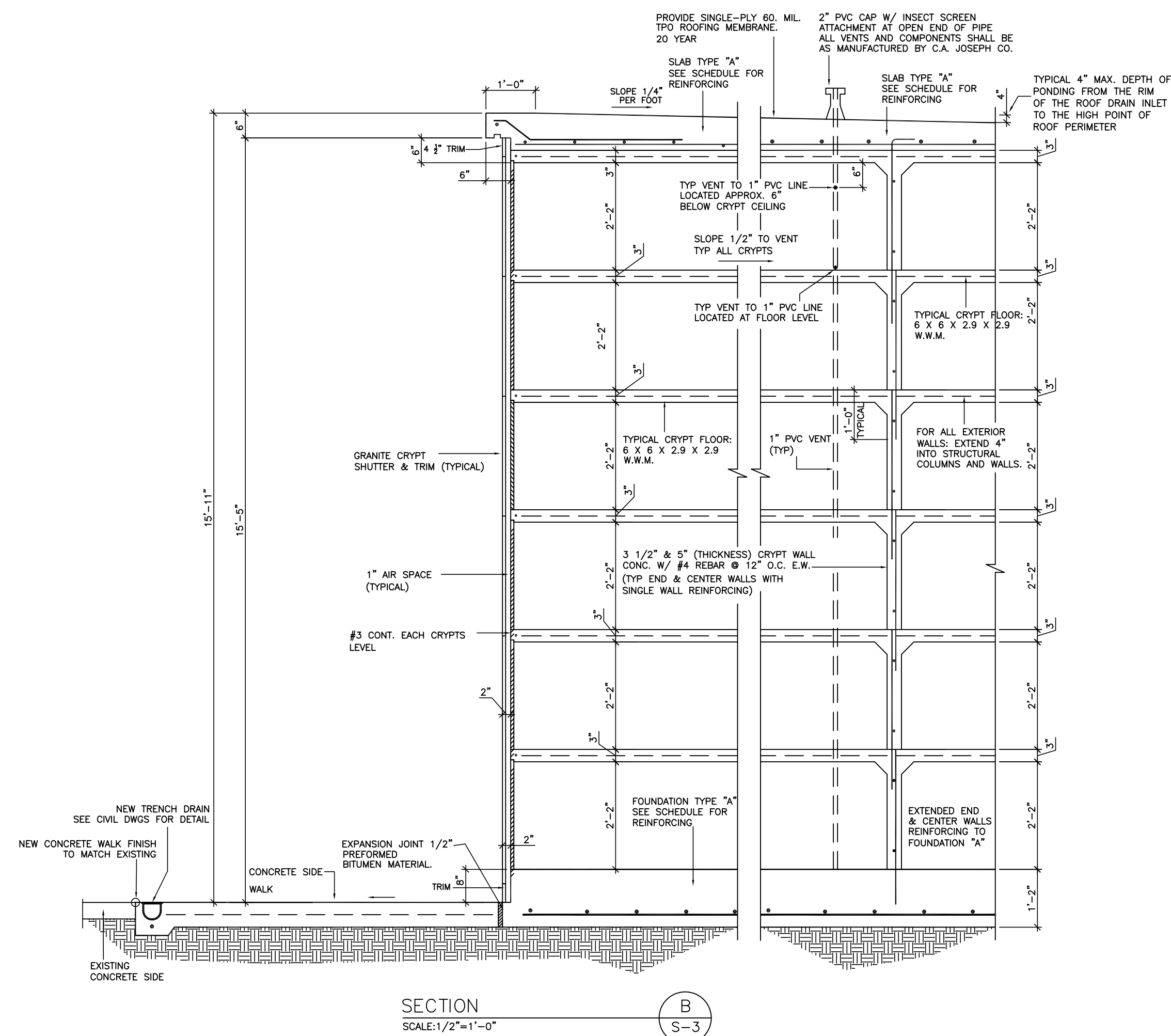
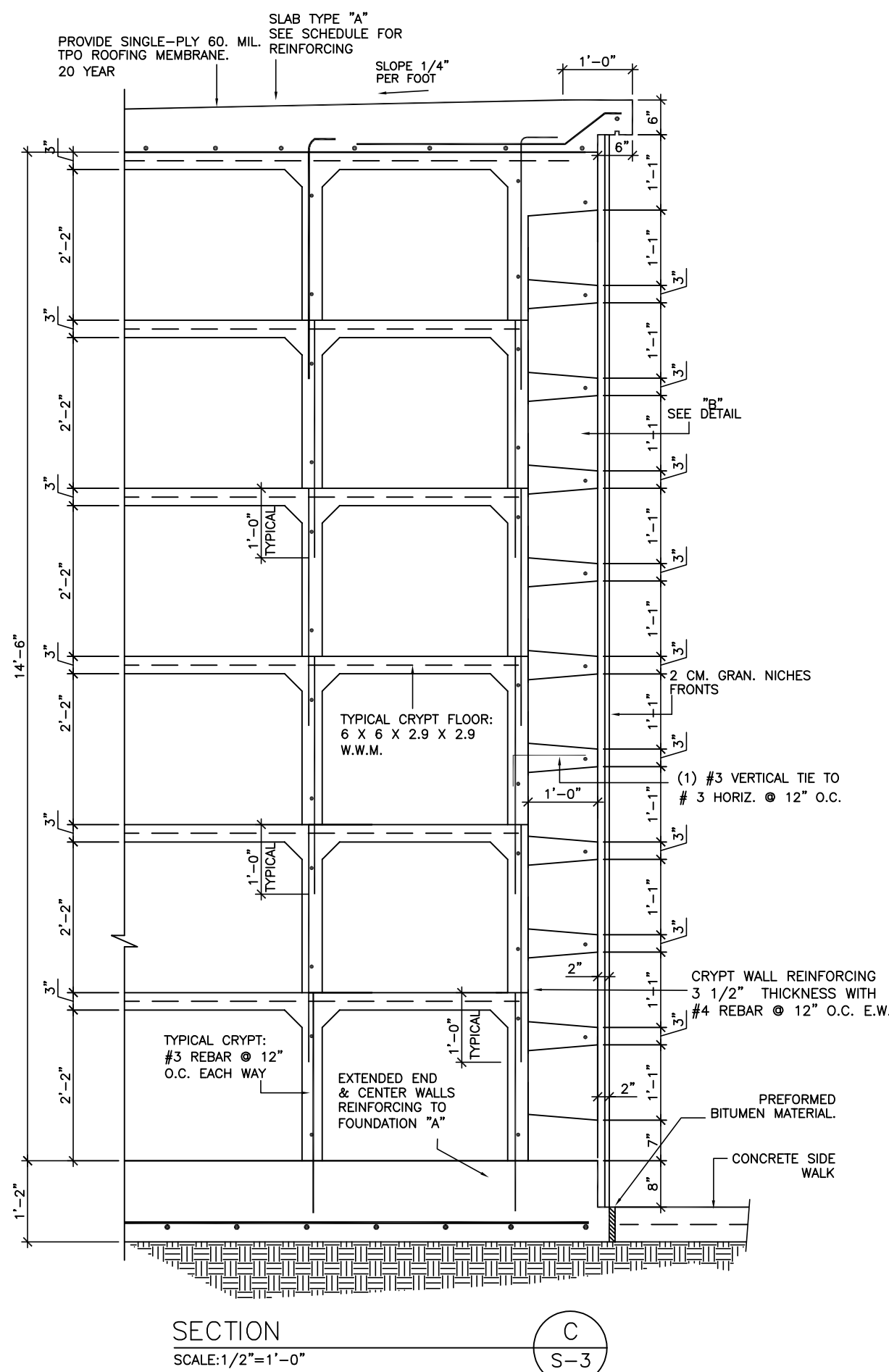
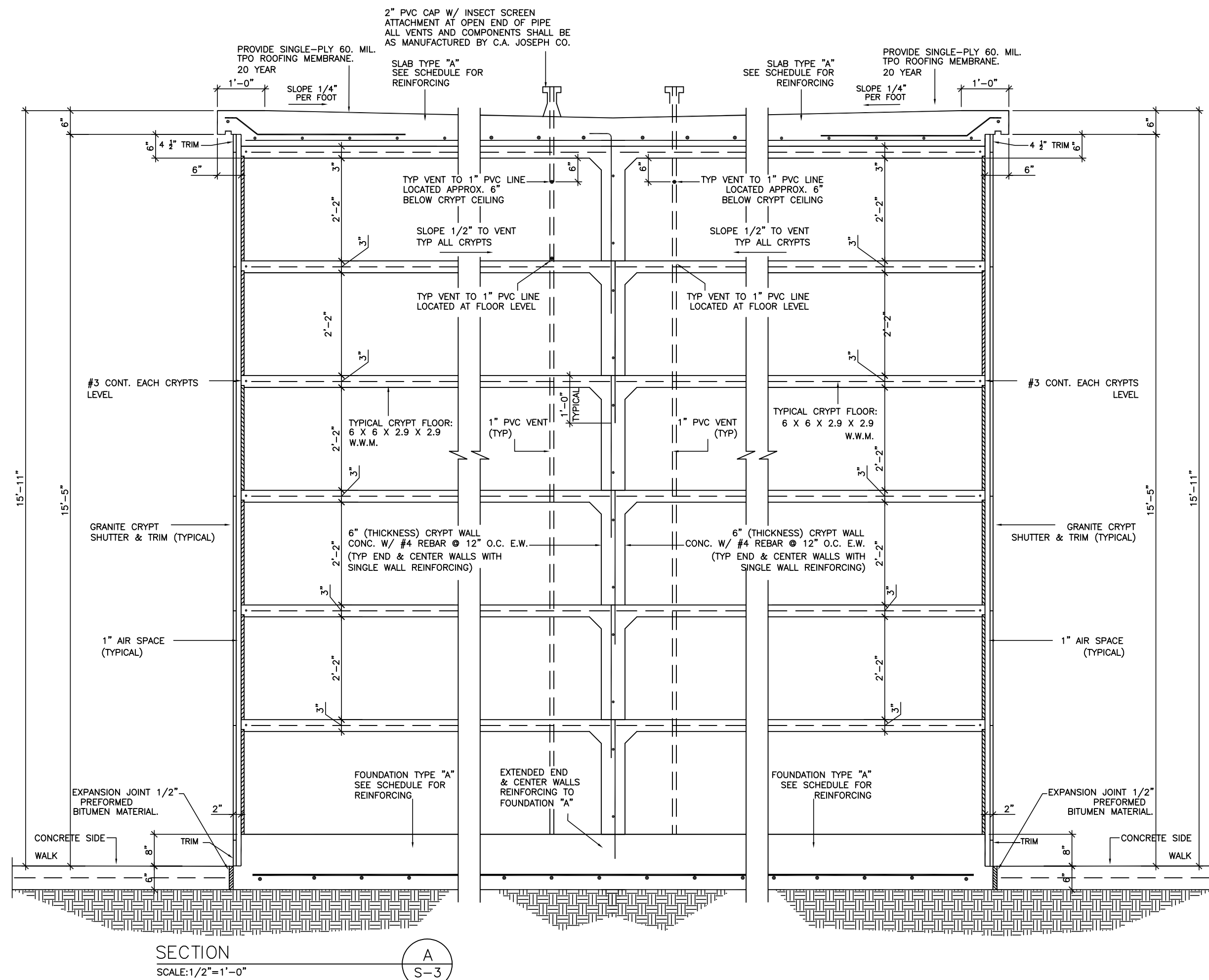
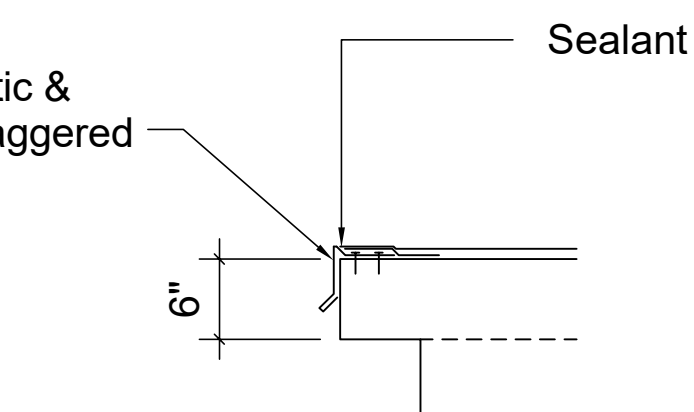
**Proposed Mausoleum Building At**  
**Forest Lawn Memorial Gardens**  
200 WEST COPANS ROAD POMPANO BEACH FLORIDA

Mtl Edge  
(Prime Set In Mastic &  
Fasten 3" O.C. Staggered



Roof Note:  
Difference In Level Between Roof Drain & Edge Of Roof For Free Evacuation Of Water Is 6" Max.  
Excess Of Water Over Permitted 5" Has Been Considered In The Design Of The Roof Structure

**EDGE DETAIL**  
NTS

Bars Stabbing:  
method to obtain splices in vertical bars is "stabbing" or setting the bars in fresh  
Concrete to achieve continuity in the vertical steel reinforcing

**ARPER**  
CONSULTING  
ENGINEERS

ARPER Engineering  
811 NW 43rd Avenue Suite 301  
Miami Florida 33126  
(305) 741-4466  
www.arper.us  
Alejandro Ramirez, PE 52742

This item has been digitally signed  
and sealed by Alejandro Ramirez,  
PE on: see seal date Printed  
copies of this document are not  
considered signed and sealed and  
the signature must be verified on  
any electronic copies.

Revisions:

Date: 02-18-25

Comm. No. 2405